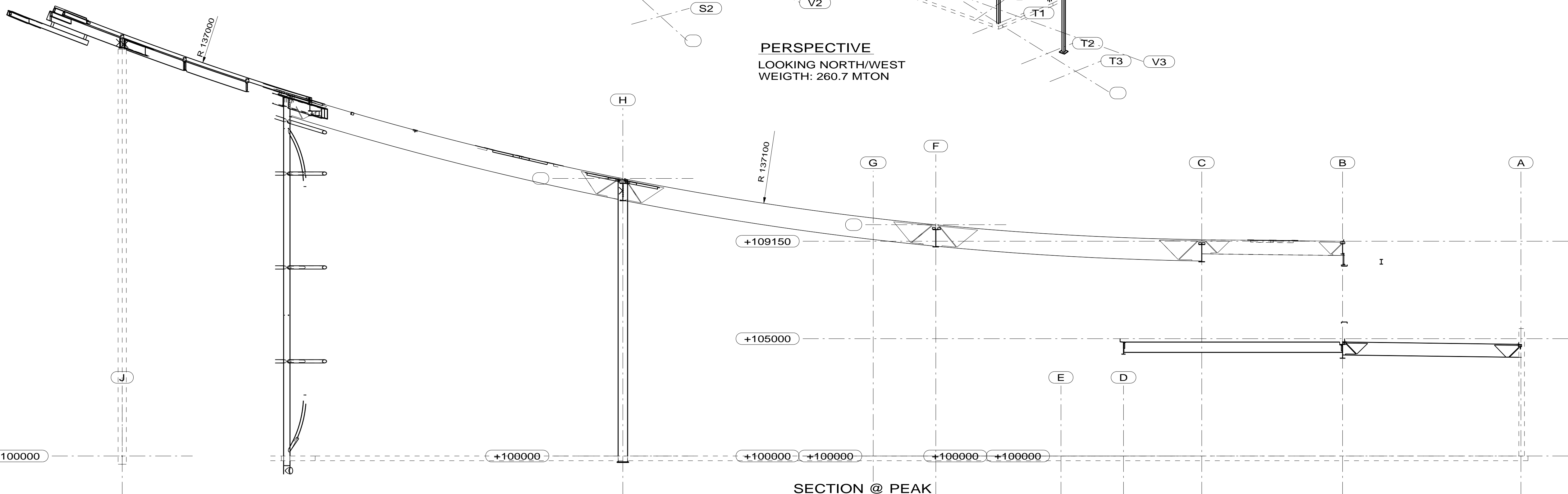
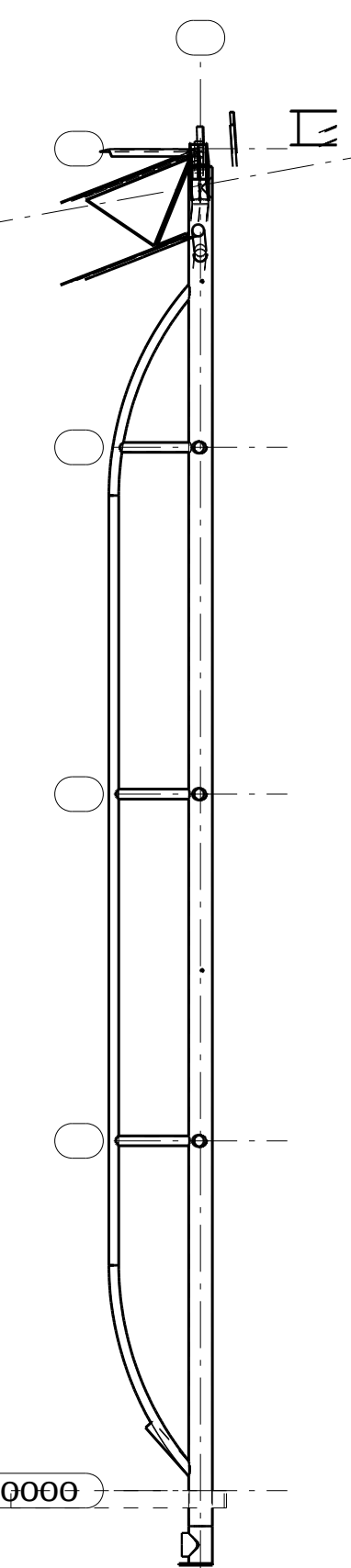


PERSPECTIVE
LOOKING NORTH/WEST
WEIGHT: 260.7 MTON



SECTION @ PEAK



SECT. @ FEATURE COL.

A	ISSUE FOR APPROVAL	FEB 6/06
Δ	DESCRIPTION	DATE
ANLIN		
WELDING & STEEL FAB.		
CUSTOMER: PCL - MAXAM		
PROJECT: RCMP HERITAGE CENTRE		
DWG. TITLE: PERSPECTIVE		
DRAWN: CDS/AJL	CONTRACT	4224
MATERIAL: G40.21-350W U/N	CHK'D: NC	DWG. NO. 3D
HOLES: 21d	UNOTED	DATE: 09/08/2009
PAIN: SEE SPEC'S	REF:	

MATERIAL: G40.21-350W U/N
CHK'D: NC
HOLES: 21d
UNOTED
PAIN: SEE SPEC'S

CONTRACT
DATE: 09/08/2009

4224
DWG. NO. 3D